



**SELECT** Staging  
Concepts  
[www.selectconcepts.com.au](http://www.selectconcepts.com.au)

# PILOT CHOIR RISER STRAIGHT FORMAT

PILOT Choir Riser Systems may be assembled with a choice in Podium Sizes. Illustrated here is a Three Tier System using Black Timber Stain finish, 2m x 0.5m Podiums @ 200mm, 400mm and 600mm high with Safety Accessories



## Assembly Instructions



**READ AND UNDERSTAND ASSEMBLY INSTRUCTIONS AND ANY OTHER SAFETY INSTRUCTIONS BEFORE ASSEMBLY.**



**ENSURE THE ASSEMBLY AREA IS CLEAR AND SAFE TO WORK IN.**



**SCAN QR CODE TO VIEW ASSEMBLY VIDEO**

# 1

## COMPONENTS

SUBSYSTEM	COMPONENTS
<b>STAGE PODIUMS</b>	With Corner Leg Brackets and Wing Bolts
<b>STORAGE TROLLEY KIT</b>	T-Bolts and Hand Wheels, Clamps and Allen Key
<b>SQUARE LEG SETS</b>	Aluminum - Individual Sets equal Tier Heights
<b>KLEMM-FIX CONNECTORS</b>	Klemm-fix and Allen Key - if joining 2 units together
<b>LEG CLAMPS</b>	2 Way and 4 Way clamps
<b>SAFETY HAND RAILS</b>	With T-Bolts, Hand Wheels and Hand Rail Clamps



Stage Podiums



Podium Insert Sets



Storage Trolley



Klemm-fix Connector and Allen Key Tool



2 Way Leg Clamps



Hand Safety Rails and Hand Rail Clamp

**CONTACT THE SELECT STAGING CONCEPTS SALES TEAM IF YOU REQUIRE ADDITIONAL ASSISTANCE**

**Phone 1300 778 243**

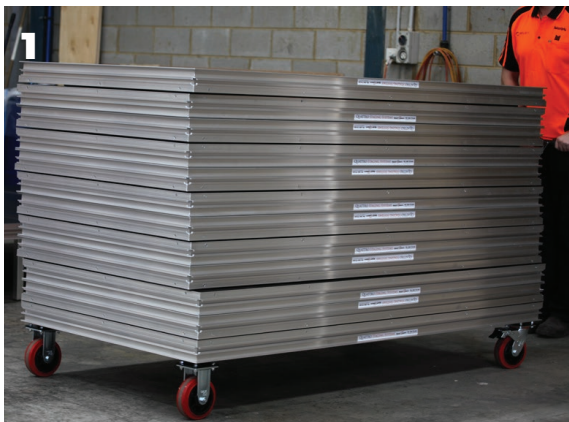
**[sales@selectconcepts.com.au](mailto:sales@selectconcepts.com.au)**



# 1 ASSEMBLE THE CHOIR RISER

- 1** Using the Storage Trolley Kit move the Stage Components to the area where you wish to assemble the PILOT Choir Riser.
- 2** Remove the first Podium off the Trolley Kit and turn upside down.
- 3** Insert the 4 longest Podium Legs (600mm) into each of the Corner Brackets on the underside of the Podium. Hand tighten each Wing Bolt so the leg is secured.

- 4** Turn the Podium over on to the Legs.
- 5** Position the first Top Choir Riser Tier Podium at the rear corner of where the Choir Riser is to be located.



Use the Storage Trolley Kit to move Components to correct area.



Remove the first Podium and turn upside down.



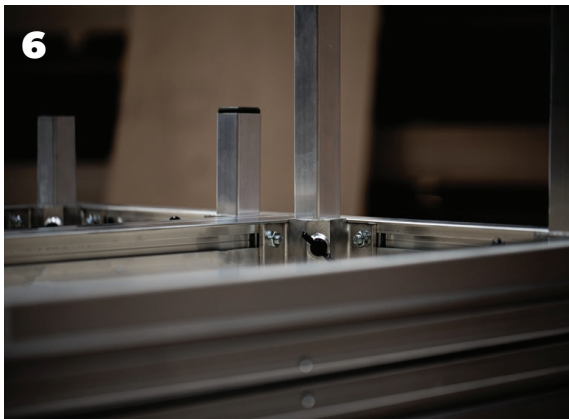
Insert 4 Longest Podium Legs into Corner Brackets and hand tighten Wing Bolts.



Position the first Top Tier Podium at the rear corner of where the Choir Riser is to be located.

## 2 ASSEMBLE THE CHOIR RISER - CONTINUED

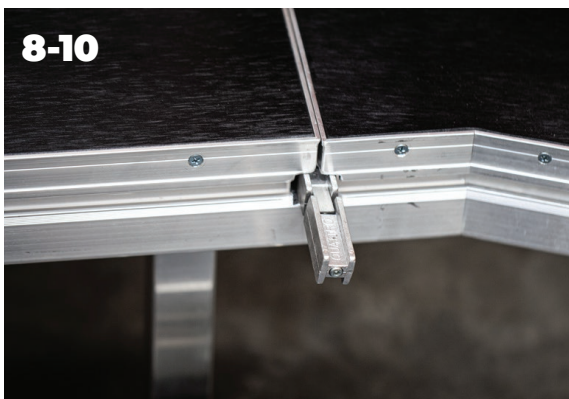
- 6** Repeat for the next Podium – Insert a set of the longest Legs (600mm).
- 7** Position the second Podium short side against the first Podium short side.
- 8** Insert the Klemm-fix Connector into the Extrusion opening of the rear of the two Podiums. When inserting the Klemm-fix Connector ensure it is facing up – TOP is on the top side.
- 9** Insert the Klemm-fix Connector fully until it is flush with the interior wall of the Extrusion. This will lock the two Podiums together.
- 10** Lock the Klemm-fix Connector with the Allen Key Tool – with the Tool already engaged into the Screw Head, use the Tool to push the Klemm-fix Connector into place – gently tighten – don't over tighten.
- 11** Repeat for the other side of the two Podiums – so each short side of adjoining Podiums has a Klemm-fix Connector securing the Podiums together.
- 12** Assemble all remaining Top Tier Podiums with the longest Leg sets and join together with the Klemm-fix connectors.



Insert a set of the longest legs into the next Podium.



Position the Podiums short side to short side.



Insert a Klemm-fix Connector, the correct way up, fully into the rear Extrusion opening. Gently tighten with Allen Key Tool.



Assemble all remaining Top Tier Podiums with the longest Leg sets and join together with the Klemm-fix Connectors.

**CONTACT THE SELECT STAGING CONCEPTS SALES TEAM IF YOU REQUIRE ADDITIONAL ASSISTANCE**

**Phone 1300 778 243**

**[sales@selectconcepts.com.au](mailto:sales@selectconcepts.com.au)**

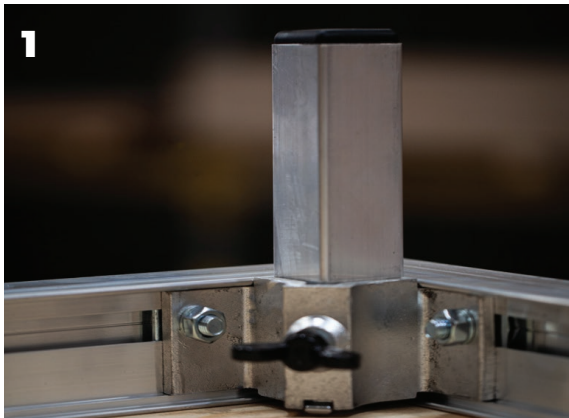


### 3 ASSEMBLING THE MIDDLE TIER

- 1** For the Middle Tier use the corresponding middle size sets of Stage Legs (400mm).
- 2** Follow the Top Tier methods and insert all sets of Legs into the Middle Tier Podiums, Hand Tighten and position all Podiums in front of the Top Tier Podiums.
- 3** Insert fully and lock the Klemm-fix Connectors either side of two Podiums until the complete Middle Tier is joined into one row.

### 4 ASSEMBLING THE BOTTOM TIER

- 4** For the Bottom Tier use the corresponding smaller size sets of Stage Legs (200mm).
- 5** Follow the Top and Middle Tier methods and insert all sets of Legs into the Bottom Tier Podiums, Hand Tighten and position all Podiums in front of the Middle Tier Podiums.
- 6** Insert fully and lock the Klemm-fix Connectors either side of two Podiums until the complete bottom Tier is joined into one row.



1 Insert the medium sized Legs for the Middle Tier and the small sized Legs for the Bottom Tier.



2 Hand Tighten Wing Bolts so Legs are Secure.



3 Each Podium should have a Klemm-fix Connector, locking it to the Podiums either side.



6 All 3 Tiers of your Choir Riser should now be assembled.

**CONTACT THE SELECT STAGING CONCEPTS SALES TEAM IF YOU REQUIRE ADDITIONAL ASSISTANCE**

**Phone 1300 778 243**

**[sales@selectconcepts.com.au](mailto:sales@selectconcepts.com.au)**



## 5 ADDING THE LEG CLAMPS

- 1** Each Tier must be securely joined to each other with the 2 Way Leg Clamps and 4 Way Leg Clamps.
- 2** Each group of 4 Legs are attached with a 4 Way Leg Clamp. Position the Clamp around the interior group of 4 Legs half way up and hand tighten.
- 3** The exterior groups of 2 Legs must be secured with a 2 Way Leg Clamp. Position the Clamp around the 2 Legs half way up and hand tighten.
- 4** Repeat until all Tiers are secured to the Tier in front and behind.

## 6 ADDING THE SAFETY RAILS

- 5** Position all rear Safety Hand Rails. Slide the Hand Rail T-Bolts into position on the rear of the top Tier Podium Extrusion. Slide the Hand Rails onto the T-Bolts. Add the Hand Wheels and hand tighten once all Hand Rails are correctly in place.
- 6** If Tier Side Rails are included, position the Hand Rail T-Bolts into the Podium Extrusion on each Tier to correspond to the length of the Side Tier Rails. Slide the Hand Rail over the T-Bolts and secure with a hand tightened Hand Wheel.
- 7** When all Hand Rails are positioned and secured add the Hand Rail Clamps to each Hand Rail join. Position the clamp half way up each adjoining Hand Rail. Using the Rail Clamp Allen Key securely tighten the Rail Clamp bolt. All safety Hand Rails are to be clamped including at the rear corners.



Add 2 Way and 4 Way Leg Clamps to secure the Podiums. Position Clamps half way up Leg and hand tighten.



To attach Safety Hand Rails, Slide T-Bolts into correct place on Extrusion. Slide Hand Rails onto T-Bolts.



Add Hand Wheels and Hand Tighten once all Hand Rails are correctly in place.



When all Hand Rails are secured, add Hand Rail Clamps. Use Rail Clamp Allen Key to securely tighten the Rail Clamp Bolt. All Rails should be joined to each other.



Your Completed PILOT Choir Riser.

**CONTACT THE SELECT STAGING CONCEPTS SALES TEAM IF YOU REQUIRE ADDITIONAL ASSISTANCE**

**Phone 1300 778 243**

**sales@selectconcepts.com.au**



## **7** OPTIONS

- PILOT Tiered Choir Riser systems may have multiple Tiers – our Standard Stage Legs are available from 200mm to 2000mm high; we offer Adjustable Height Legs 400/600mm, 600/1000mm and 1100/1300mm high.
- PILOT Tiers may also be 300mm or 400mm apart in height – a Modular Step @150mm or @200mm high may be added to each Tier for compliant access to the next Tier.
- Tiered Systems gaps between Tiers may be infilled with our QUATTRO Fascia systems.
- PILOT Tiered Systems may also add QUATTRO Chair Border Rails if required.
- All Tiered Choir Risers 1000mm High or Higher must have Safety Hand Rails

**CONTACT THE SELECT STAGING CONCEPTS SALES TEAM IF YOU REQUIRE ADDITIONAL ASSISTANCE**

**Phone 1300 778 243**

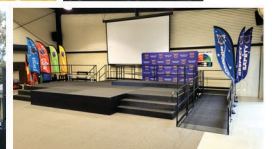
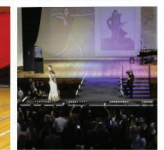
**[sales@selectconcepts.com.au](mailto:sales@selectconcepts.com.au)**





**SELECT** Staging  
Concepts  
[www.selectconcepts.com.au](http://www.selectconcepts.com.au)

Select Staging Concepts is Australia's trusted manufacturer of premium, custom-built staging solutions. Specializing in portable, permanent, and modular stages, they cater to schools, event venues, performing arts spaces, and corporate settings. Proudly Australian-owned and operated, they design and manufacture high-quality, durable staging systems tailored to any space or requirement. With a commitment to safety, innovation, and customer satisfaction, Select Staging Concepts ensures every stage meets the highest standards. Whether you need choir risers, tiered seating, or custom staging, they provide expert advice and seamless solutions to bring your vision to life. Built for performance, designed for success.



# Products that Perform